



South-Central Indiana Brewers

Volume 1 No. 4
The Heartland Brew News

January– May 2008
Chapter #164 of the BCCA

Our first ALL DIGITAL issue! Springtime Shows & Can Discoveries!

President's Message

Ok, here's my problem . . .
What to write about first!

Thanks to the efforts of the SCIB chapter members, we have taken the bold step in upgrading our show location in September! The "Midwest Mega Show" as its now known, will be held at the America's Best Value Inn, located at I-465 and Emerson Ave, in Indianapolis. That's right! Our show has grown so much in just two years, we've contracted with a newly renovated hotel to host this years event. But that's not the best part! This year, we've negotiated a co-sponsored show with the BCCA's fastest growing at large chapter; The Aluminum Bottle CANois-seurs. This new chapter who specializes in the new aluminum containers will bring collectors from all over the US. Combined with the success the SCIB has enjoyed over the last two years, offering location, breweriana and many regional collectors, this show is going to be the start of a wonderful fall collecting event. The location used to be the Holliday Inn, and is now under new management, who is in the process of giving the hotel a \$5 million dollar renovation. It's just the right size for the show, with room to grow. We plan to use all three meeting rooms and there is a large hall surrounding the rooms that can easily accommodate even

more tables. The hotel also offers a restaurant and lounge, plus outdoor swimming. Location is the best part. Overlooking I-465 and Emerson Ave, the hotel is minutes from interstates connected to all parts of the Midwest. In the past we've welcomed collectors from New York to Missouri and a hotel show was needed to accommodate night-beer for guests. **Make your reservations early!** We may have to reserve another floor to keep the group together. The raffle is another issue. The last two years is been nice . . .not thrilling, but nice. This year we need to focus on some real prizes that will bring much needed dollars for the kitty. Give till it hurts! I plan too. Despite the skyrocketing cost of travel lately we should have a nice draw from across the region. **Lets make it happen!**

As the headline states, this is our very first all digital issue. Digitally printed directly off the program software, you'll notice that all photos and text are of super high resolution. Combined with the all color pages—that has set this newsletter apart from standard newsletters— this new process of printing will deliver an even better quality to your newsletter. Who says, you cant improve on perfection?

Speaking of awesome publications, a big giant thanks to the SCIB chapter members who contrib-

uted to the Indianapolis Brewing Company article, cover story, in the current BCCA magazine. Yours truly compiled the text, but its all about the collection pieces! To be photographed for the article, SCIB members produced many one of a kind pieces that most collectors across the country have never seen before. Once again, SCIB collectors pieces in the national spotlight and you made it happen!

The beer can gods are smiling this springtime as not one, but two small Indiana groups of vintage beer cans have surfaced! One was from an old collection from an unlikely source, the other was one of those magical moments of unintentional discovery. Curious? Stories inside!

One last sad note. Recently the BCCA received word of the passing of Don Hicks #16600. Don was the vice-president of the ABC chapter co hosting our show in September. Don joined the BCCA in 1976 and served on the Board of Directors followed by all three officer positions ending with the BCCA presidency in 1991. In the following years he worked on better communications with international members, secured the BCCA's CANvention cans and brewery donations for many CANventions. I knew Don from several board meetings. He was easy to talk to and always loved to talk about collecting. A good man, who'll be missed.

Mike Pope #32543
SCIB President

"Aged that Extra Month"

- President's Message.
- Hoosier Can Stash Part 1.
- Hoosier Can Stash Part 2.
- East Coast Show Review.
- A visit to Breweriana.com
- SBIC collection Spotlight; Oertles '92.
- Summer event schedule & other cool stuff!

Photo: www.trayman.net



Hoosier Can stash parts 1 & 2 !!!

SUPER EXTRA PALE BREWED

Part 1. SBIC Patriarch member Lea Colvin shares a tale of beer cans discovered in an attic from an unlikely source. Just goes to show, you never know where cans will turn up!

By Lea Colvin #1462

I go to the hospital at least once a week to have my blood drawn. While making small talk with one of the nurses, she asked if I had any hobbies now that I am retired. Of course I told her! She then explained to me that her uncle had kept a small collection of beer cans over the decades in his attic, and was included, among other things, that he gave her when he passed away. We traded phone tag over the next few days and I finally went over to check them out.

The cans were an odd mix from the common to the scarce. First off, two beautiful condition foreign 12oz flat tops, a Tiger Lager from Singapore and a Tecate Cervesa, from Mexico. Next, some off-grade flat tops, but odd brands for the Indiana region, flats like Jay Vee, Gunthers Bock, Easy Life, Tivoli Bock and a Wilshire Club O/I. Also included,



This Windsor Beer "extra pale" brand was produced by the legendary Manhattan Brewery of Chicago. Few survive today in grade 1+ condition.

a Duquesne Con-O-Ber, Olive Drab, Withdrawn free of tax for exportation cone top! How could this small treasure get any better? . . . An on-grade Windsor Beer extra pale O/I from Manhattan Brewing Co. Chicago, IL. I knew I would have to spend some bucks to get them all. So I kept seeing her at the hospital but I did not have any info regarding the value of the Windsor, so I didn't make an offer. (I lost my \$100 flats and cones book!) I contacted Mike Pope who gave me a general value and I was back at her house. Of course there are some cans which Mike will put on eBay, and I kept the OD Duquesne Can-O-Ber. I thought of saving the extra cans, which will not sell. For beginning collectors, but I might be carrying them forever. So they are trash bound!

Don't make any offers on the Windsor as Mike is now the proud owner. He was over the other day with his lovely wife, Debbie, and they took many pictures of the collection. It was a good time. Also, check out the flier for our next show! Very Nice. I believe I heard the Mr. Greg Gerke should get the credit of it! Good job dog!!!

School House Rock A Sterling Discovery!!!

Part 2. SCIB Secretary Steve Paddack gets the call of yet another small discovery. This time it's the flying fickle finger of fate that points the way to a school demolition project in which a "wall find" tale of discovery ended with these rare "white stripe" Sterling Pilsners coming back home again to Indiana via the east coast . . .

By Steve Paddack #31210

This nice group of "white stripe" Sterling's was acquired by Steve Gordon #24599 through an internet lead. Thirteen examples of this scarce variation were found by a worker during a school demolition project somewhere in Indiana. Steve, being an east coast guy, asked me about the cans



and I told him I thought the variation to be something of a sleeper. I had acquired one about six years ago, and in the time since had seen only one or two off-grade examples for sale. I told Steve that I thought I could place the cans and we worked out an arrangement that happily brought Nine cans found new owners immediately, a testament to how tricky this variation has been for Indiana collectors to obtain. I'm assuming this was a short run of cans, and that the Sterling drinkers who left them in the school picked just the right window of time to leave behind these artifacts. Also found was a cardboard six pack holder, and several more common cans including Blatz, Stroh's, and Oertels flat tops. Thanks to Beer-cannan for allowing these cans to find their rightful place in several Hoosier collections!

The Sterling Premium Pilsner "white stripe" variation USBC 136-36 is the seldom seen label that closely resembles the common label of 136-37. Highly prized by local collectors, these Sterling flats are scarce!



Collection Spotlight: Oertel's '92

By Gary Lange #32991 ; The Oertel Brewing Co.-Post Prohibition The Oertel Co. resumed brewing operations in 1933 after the repeal of prohibition. In 1936, operations ran under the name of the Oertel Brewing Co. They produced Oertel's Real Lager Beer from 1933-36, Oertel's Pilsner from 1934-36, and Oertel's 92 Bock from 1934-1960. The soon to become famous Oertel's 92 beer was produced from 1934-83, although the Oertel Brewing Co. itself closed in 1967. This was the beer packaged in the notorious gold metallic finish flat tops that appeared in the 50's. With the advent of zip tabs, Oertel's Beer was packaged in cans with a red and white label. Oertel's also produced Little Brown Jug Ale from 1934-36 and Oertel's Cream Ale from 1934-39. With the advent of horse racing in Kentucky, Oertel's produced Thoroughbred Malt Liquor from 1960-68. This resulted in two different labels that are tough for collectors to acquire. I believe the first of these labels was produced in a flat top, but the later one was produced as a pull-tab only. Kentucky Malt Liquor was produced by Oertel's from 1964-68. 📖

SCIB member Gary Lange of Huntingburg, IN shares a fine assortment of Oertel's breweriana. Often overlooked in favor of the more widely known Kentucky labels, it's a stellar example of a local specialized brand of collecting!



A Quick Trip to the Pickwick

And a visit to Breweriana.com



By Mike Pope #32543

A couple of times a year, my wife Debbie and I volunteer to drive a cargo van full of shelter dogs from southern Indiana to new homes in the New England area, expenses paid. Last month, we were all set to head for New Hampshire, when Ed Johnson posted on the Rusty Bunch site stating there was a show by the Pickwick chapter located in Holyoke, MA. (birthplace of the game of volley ball) over the weekend. What timing! We were able to make the show! The



trip to New Hampshire had suddenly come up and now this show happening at the right place at the right time. The beer gods were smiling! After the trip to the coast and the doggies safely delivered, Saturday morning arrived and the scene was a 100 year old textile mill located near the Connecticut River. After a trip up the freight elevator to the fifth floor, today it's the home of the Paper City Micro Brewery. Along with the small brewery and bar, one will also find a cool collection of breweriana tucked away in glass cabinets and along the shelves, and an awesome collection of vintage Indian Motorcycles! Advertisements, bottles and cans rust and shine, this show offered some wonderful north east collection pieces! SCIB member Fred Goerlach had a box of cool cans and Tommy Leo from Rochester was in attendance with some great quart cones. A nice little show offering lots of great east coast cans and breweriana. Special thanks to Ed Johnson, Keith Norton and Dave Lange for the hospitality and to all the Pickwick chapter members. Anyone interested can contact the brewery at www.papercity.com and stop by for a Ireland Perish Golden Ale. Hopefully this will become a regular show on my calendar as good folks, a good show and working for charity make it all worth it!



The Paper City Brewery show with the Pickwicks.



Tommy Leo (center) Fred Goerlach and I in front of the bar during the show. The camera just loves Tommy!



The Paper City Micro Brewery's bottling operations. Idol for the show, the brewery enjoys a loyal customer base.



Several totes of great cans were on display for sale or trade and some quality serving trays from Narragansett.



Makeshift tables of pallets and kegs, cabinets of collection pieces gave this show a unique atmosphere. A great time!



Jerry Pescardo tends the taps at the Paper City Brewery. Debbie liked the Watermelon Pale Ale. Typical!



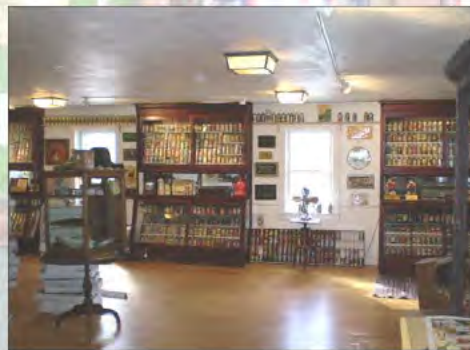
The Brewery's collection pieces displayed are a wide range of eastern breweriana, with a nice Bay State Ale.



Welcome to Dan Morean's breweriana.com!

Also in attendance at the show was Dan Morean, who specializes in on line breweriana sales and in particular, high quality vintage cans. Dan invited several folks back to his place for an open house and we jumped at the chance to see some wonderful breweriana. Upon arrival in the small town of Brimfield, MA, we took a tour of his 150+ year old home and a private viewing of his collection of impossibly rare cans and beautiful pre prohibition lithographs of east coast breweries. Over in his showroom/warehouse, thousands of cans waiting to be shipped out all over the country and a beautiful showroom of cans and signs on display with hundreds of cans and other breweriana waiting to be shipped all over the US. Also attached to the showroom, a rec-room filled with antique furniture, bar and billiard table. Special thanks to Dan and his wife Julie for their warm hospitality (even our dog got to see the showroom!) for a truly a memorable experience!

Clockwise; Upon entering the main showroom, one can only stand in awe as this is the closest thing to a beer can museum you'll find!





Above: Just a few examples of the quality cans available from the warehouse. These are some of the scarcest cans in the hobby in this condition. Below: Dan's rec-room is filled with all types of breweriana on display and for sale. Several rare pieces can be found at the bar display including miniature bottles, back bar items, trays, lithographs, outdoor steel signs, ball tap knobs, tip trays, foam scrapers, bottles, labels, openers and neons. What a concentration of specialized pieces not only available on the market but a tastefully displayed collection of some of the finest pieces in the collecting hobby!



Above; Open house visitors from the Paper City Brewery– Pickwick show have lots to talk about and in just about. In every part of the display sections one can find cans and other items usually seen in reference books and in hobby lore. Wow!
 Want to see more? Log onto breweriana.com

Up Comming 2008 BCCA Summer Show Dates!

Show Date City & State Host Chapter

Jun 1	San Diego County, CA	Aztec
Jun 1	Blue Ash, OH	Queen City
Jun 1	Leesport, PA	Tri-Chapter Show
Jun 6-7	Dabuque, IA	Hawkeye, North Star
Jun 8	Phoenix, AZ	A-1
Jun 8	Pittsburgh, PA	Old Frothingslosh
Jun 13-14	Florissant, MO	Gateway
Jun 14	St. Louis, MO	Board of Directors Meeting
Jun 17-21	Dabuque, IA	27th Annual ABA
Jun 22	Elk Grove, IL	Windy City
Jun 27-29	Abilene, KS	KC's Best, Carrie Nation
Jul 11-12	Waynesville, OH	Miami Valley
Jul 11-12	McCook, NE	ABA Event
Jul 12	Cloquet, MN	Nordlagers, North Star
Jul 13	Lagrange, OH	Lake Erie
Jul 16-19	Bethel, ME	36th Annual ECBA
Jul 18-19	Macon, GA	Confederate Coalition Show
Jul 19	Fenton, MO	Board of Directors Meeting
Jul 19	Frankenmuth, MI	Mid-Michigan, Rusty Bunch
Jul 26	Cold Spring, MN	North Star
Jul 26	Tonawanda, NY	Simon Pure
Jul 27	Joliet, IL	Prison City
Jul 29-Aug 3	Bettendorf, IA	37th Annual NABA Show
Aug 2-3	Tulsa, OK	Progress
Aug 2	Spring Hill, FL	Gator Traders
Aug 8-9	Lena, IL	Weekend At Pauly's Show
Aug 8-9	Gordonsville, VA	Rich Brau, Rusty Bunch
Aug 8-9	Evansville, IN	Antique & Flea Market
Aug 9	Chippewa Falls, WI	North Star
Aug 9	Macungie, PA	Horlacher
Aug 10	Scottsdale, AZ	A-1
Aug 10	Blue Ash, OH	Queen
City Aug 16	Westminster, CO	Mile Hi
Aug 16	Oak Grove, OR	Cascade
Aug 17	Green Bay, WI	Packer
Aug 27-30	Orlando, FL	CANvention
38 Aug 28	Orlando, FL	Board of Directors Meeting
Sep 12-13	New Ulm, MN	Schell's Border Batch
Sep 12-13	St. Mary's, PA	Old Frothingslosh
Sep 20	Portland, OR	Cascade
Sep 21	San Diego County, CA	Aztec
Sep 26-27	Indianapolis, IN	South Central Indiana, ABC
Sep 27	Council Bluffs, IA	Cornhusker
Oct 3-4	Scottsdale, AZ	A-1
Oct 3-4	Springfield, IL	Breweriana Bonanza
Oct 3-5	Sufferin, NY	The NEW Brewery Show
Oct 5	Downers Grove, IL	Westmont Stroh's

Cool Links!

www.bcca.com

www.queencitychapter.com

www.therustybunch.com

www.geocities.com

www.cvbeer.com

www.collectorscarnivalshows.com

The South-Central Indiana Brewers Chapter of the Brewery Collectables Club of America is an organization dedicated to collecting anything related to the brewing industry. With a particular interest in breweries past and present in the southern Indiana region. Any contributions, questions, comments or suggestions may be answered at the following;

Mike Pope 1144 Tuckaway Ln.
Nashville, IN 47448.
812-988-2773 or
huber1960@sbcglobal.net

DID YOU CONTRIBUTE TO THIS NEWSLETTER?

*South-Central Indiana
Brewers Chapter Officers*

*Mike Pope #32543
President*

*Fred Johnson #22847
Vice President*

*Tom Goecker #30033
Treasurer*

*Steve Paddack #31210
Secretary*